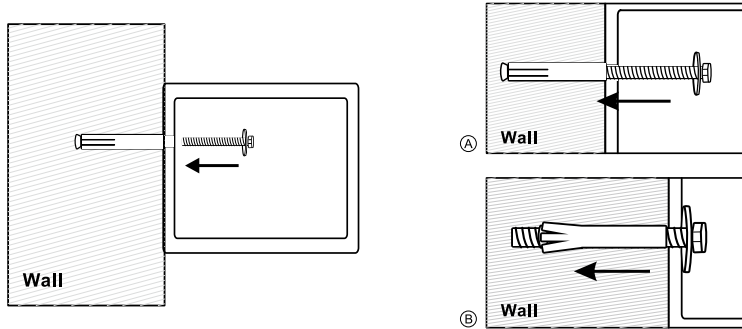


MOUNTING METHOD

Fix the safe in the place which is not easy to move.


- Drill holes for expansion bolts (or clamping screws) in the right place.
- Turn the expansion bolts counterclockwise to separate.
- Use the expansion bolts (or clamping screws) to secure the case to the wall.
- Make sure the case is mounted in place as required and then tighten all screws.

⚠ **CAUTION:** Use the expansion bolt when there is a concrete wall surface. Use the clamping screw when there is a wooden wall surface.



For any help, kindly consult the local distributor

NOTICE ABOUT RECYCLING

 Your product is designed and manufactured with high quality materials and components which can be recycled and reused.

This symbol means that electrical and electronic equipment, at their end-of-life, should be disposed of separately from your household waste. Please dispose of this equipment at your local community waste collection/ recycling centre.

In the European Union there are separate collection systems for used electrical and electronic products. Please help us to conserve the environment we live in!

Declaration of conformity

This product complies with the requirement of the below directives:

EMC-Directive: 14 / 30 / EU,

CE Marking: 93 / 68 / EEC,

RoHS Directive: 11 / 65 / EU & 15 / 863 / EU

The detailed declaration of conformity can be found at

www.united-electronics.gr



KALLIOPI KARYDA & CO., LP
87A, 17th Noemvriou str, P.C. 55535
Thessaloniki – Greece
T: +302316006600 | F: +302316006650

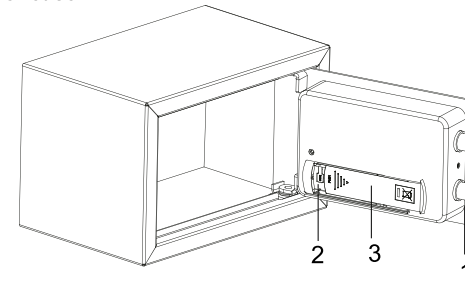
UNITED

MODEL UNITED SFH1179

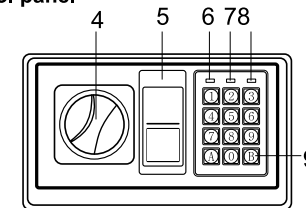
⚠ **Please do not keep emergency keys in your safe!**

INTELLIGENT ELECTRONIC SAFE

Schematic drawing of case



Schematic drawing of control panel



- | | | |
|------------------------|-------------------------|----------------------|
| 1. Bolts | 5. Emergency Lock Cover | 9. Confirming button |
| 2. Reset Button | 6. Green Light | |
| 3. Battery Compartment | 7. Red Light | |
| 4. Knob (Master Key) | 8. Yellow Light | |

⚠ **CAUTION:** All drawings in this manual have been prepared based on the EA. The exterior design or component positions of other models may be different from what is indicated in the drawings, while the operation is the same.

OPENING YOUR SAFE FOR THE FIRST TIME

Upon first opening, users should open the safe with the emergency key. The operation in details refers to "opening the safe with the emergency key".

- Remove emergency lock cover, then insert the emergency key, and turn it count clockwise.
- Turn the knob (master key) clockwise to open the door.

⚠ **CAUTION:** Finish operation, pull out the emergency key and keep it in a safe place.

INSERTING THE BATTERIES

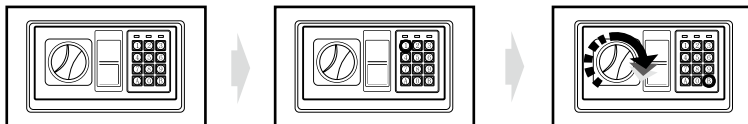
- Open the door.
- Insert 4 X 1.5V batteries into the battery compartment.
- Under normal condition, if both of the red and the green lights are on at the same time, it means the voltage is low and you should insert new batteries.

⚠ **CAUTION:** Replace 4 fresh batteries by lining them up in a manner as indicated by the "+" and "-" signs. When outage for longer than thirty minutes, you should reset the user's code.

OPENING DOOR

- Input your user's code (3 to 8 digits), each pressing results one buzzer beep and yellow light flashes.
- Press "A" (C / #) or "B" (E / *) button, the green light will be on.
- Rotate the knob (master key) clockwise and pull outwards within 5 seconds, the door is opened.

⚠ **CAUTION:** The user preset code "159". Please input the user code again if the yellow light flashes with three buzzer beeps.



CLOSING DOOR

- Turn the knob (master key) counter clockwise to close the door.

AUTOMATIC LOCK

- 3 continuously wrong entries will activate the warning beep for 20 seconds.

⚠ **CAUTION:** The key pad would be disabled during the beeping. You can only stop the beeps by opening the safe with emergency key and power-cut by removing the battery.

SETTING THE USER CODE

- With the door open, press the reset button one, start setting code when the yellow lights goes on.
- Input new code (3-8 digits), and press the "A" (C / #) or "B" (E / *) button to confirm with 2 buzzer beeps, which indicates the acceptance and storage of the new code.
- If the yellow light flashes with 3 buzzer beeps, which means the code changing is not effective, and you need to try again.

SETTING MASTER CODE

- Open the safe, input "0" twice and press reset button, start setting code when the yellow light goes on.
- Input the new master code (3-8 digits), then press "A" (C / #) or "B" (E / *) button to confirm, it will be confirmed by 2 beeps and the yellow light flashes two times, then setting is done successfully.
- If the yellow light flashes three times, it means the new code is invalid and should operate again.

OPENING THE SAFE WITH THE EMERGENCY KEY

Upon first receipt of the safe, or either the electronic circuit malfunction or codes unknown. You could also use the emergency key to open the safe.

- Remove the cover of the emergency lock.
- Insert the emergency key, turn it count clockwise, then turn the knob (master key) clockwise to open the door.

